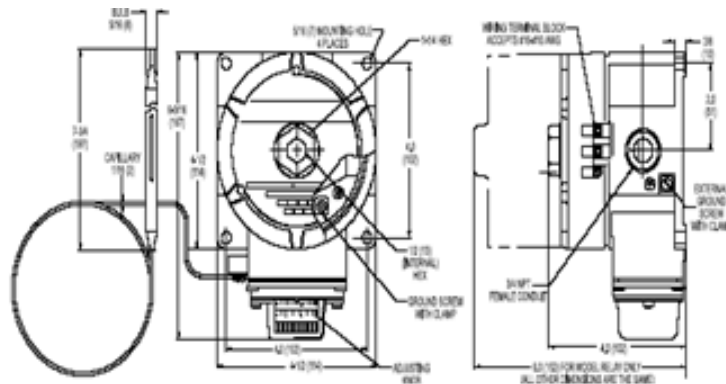


## STAT-TXR-ADJ



The STAT-TXR-ADJ thermostat is ideal for applications where freeze protection or temperature control in hazardous locations is critical. This thermostat can be used in ambient-sensing applications by placing the sensor in the air or as a line-sensing thermostat by securing the bulb to the pipe or tank.

The STAT-TXR-ADJ can be used as a single circuit control or as a pilot control for several circuits by switching a contactor.

### SPECIFICATIONS

<b>ENCLOSURE RATING</b>	NEMA 4X, 7, 9 & IP65
<b>ENTRIES</b>	One 3/4 inch NPT conduit hub
<b>SET POINT</b>	25 to 325°F (-4 to 163°C) External adjustment knob
<b>SENSOR EXPOSURE LIMITS</b>	-40 to 420°F (-40 to 216°C)
<b>HOUSING EXPOSURE LIMIT</b>	-40 to 420°F (-40 to 216°C)
<b>ENCLOSURE MATERIAL</b>	Anodized, silver painted aluminum
<b>SWITCH</b>	SPDT, pre-wired snap action
<b>ELECTRICAL RATING</b>	22 Amp @ 125/250/480 VAC
<b>ACCURACY</b>	± 6°F (± 2.9°C)
<b>SENSOR &amp; CAPILLARY TYPE</b>	316L stainless steel, silicone oil filled bulb 7-3/4" (197mm) x 5/16" (8mm) diameter 10' (3.05m) long capillary
<b>CONNECTION</b>	3 pole terminal block accepts 14-10 AWG wire
<b>APPROVALS</b>	FM, UL, CSA      Class I Group B, C, D Class II Group E, F, G
	ATEX, EEx d IIC, T6

#### MANUFACTURER

Barksdale

FOR HEATTRACER TECHNICAL ASSISTANCE CALL 1-800-663-6873 (NORTH AMERICA ONLY) OR +1.780.413.1774