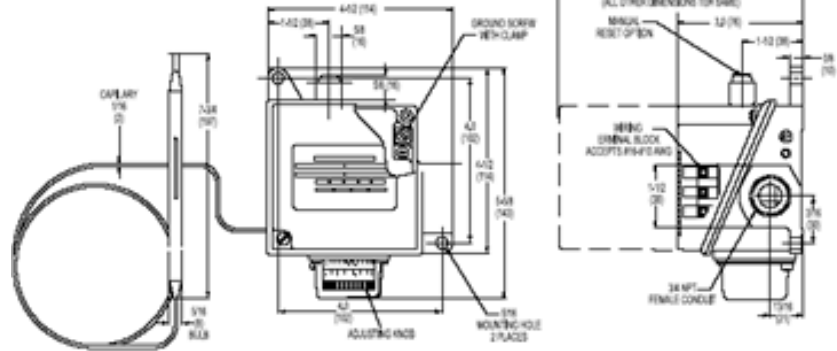


STAT-LS-ADJ



The STAT-LS-ADJ thermostat is ideal for applications where freeze protection or lower-range temperature control is critical. In cold climates this thermostat switches heating devices that prevent pipes, valves, tanks and fittings from freezing.

This thermostat can be used in ambient-sensing applications by placing the sensor in the air or as a line-sensing thermostat by securing the bulb to the pipe or tank. It can be used as a single circuit control or as a pilot control for several circuits by switching a contactor.

SPECIFICATIONS

ENCLOSURE RATING	NEMA 4X
ENTRIES	One 3/4 inch NPT conduit hub
SET POINT	External adjustment knob 25 to 325°F (-4 to 163°C)
SENSOR EXPOSURE LIMITS	-40 to 420°F (-40 to 216°C)
HOUSING EXPOSURE LIMIT	-40 to 140°F (-40 to 60°C)
ENCLOSURE MATERIAL	Anodized die cast aluminum Other parts stainless steel
SWITCH	SPDT, pre-wired snap action
ELECTRICAL RATING	22 Amp @ 125/250/480 VAC
ACCURACY	± 1% of full scale
SENSOR & CAPILLARY TYPE	316L stainless steel, silicone oil filled bulb 7-3/4" (197mm) x 5/16" (8mm) diameter 10' (3.05m) long capillary
CONNECTION	3 pole terminal block accepts 14-10 AWG wire

APPROVALS

CSA and UL listed (Ordinary areas)

MANUFACTURER

Barksdale

FOR HEATTRACER TECHNICAL ASSISTANCE CALL 1-800-663-6873 (NORTH AMERICA ONLY) OR +1.780.413.1774