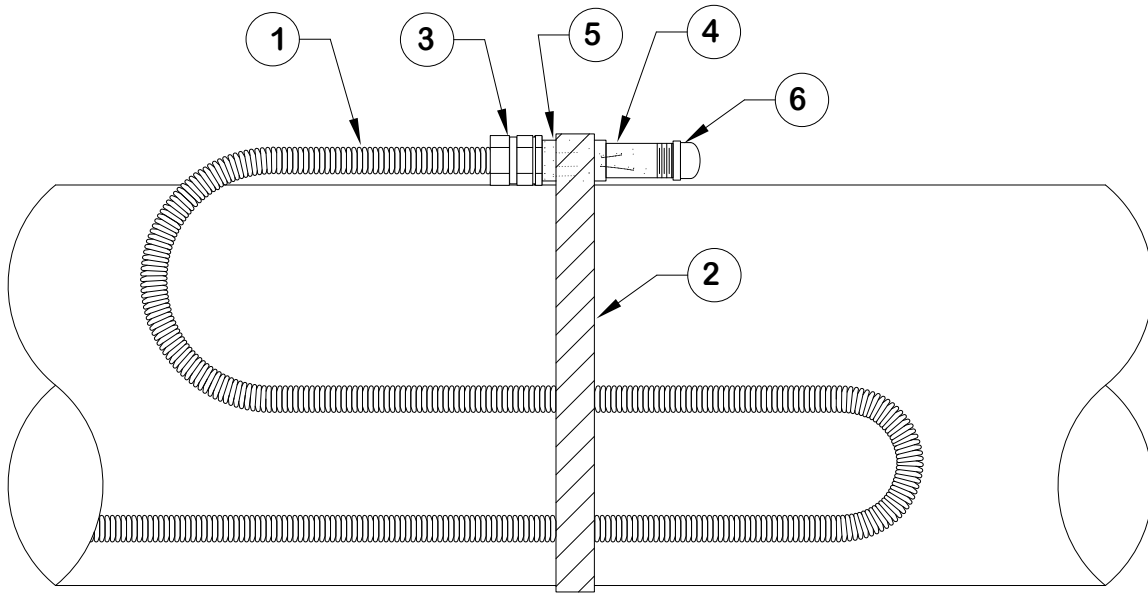


ITEM	DESCRIPTION	QUANTITY
1	PipeGuard CMH HEATER CABLE	1
2	pipe strap	AS REQ'D
3	STRAIN RELIEF. DREXAN PART NO. CMH-CON (DREX0074)	1
4	3/4" NPT x 3" NIPPLE	1
5	3/4" NPT THREADED COUPLING	1
6	3/4" NPT PIPE CAP	1



## NOTES

1. PIPEGUARD CMH HEATER CABLE END SEAL ASSEMBLY CONSISTS OF READILY AVAILABLE CONDUIT/PIPE FITTINGS OFF THE SHELF OR CAN BE SUPPLIED BY DREXAN.
2. CONSISTS OF 3/4" NPT x 3" NIPPLE, 3/4" NPT THREADED COUPLING, 3/4" NPT PIPE CAP. THESE CAN BE SUPPLIED BY DREXAN HEAT TRACER OR BY OTHERS.
3. IF THE CAP ASSEMBLY IS TO BE EXPOSED TO TEMPERATURES HIGHER THAN 121 DEGREES C (250F) THE END ASSEMBLY IS TO BE MOUNTED OFF THE PIPE OVER THE INSULATION.
4. WHERE MULTIPLE RUNS OR LOOPS OF A CONSTANT WATTAGE HEATER CABLE (SERIES MI AND PIPEGUARD CMH) ARE APPLIED TO PIPE SHOES AND SUPPORTS, CARE MUST BE TAKEN TO ENSURE THAT EXCESSIVE HEAT IS NOT GENERATED. DEPENDING IN PART UPON THE PIPE DIAMETER, IT MAY NOT BE NECESSARY TO INSTALL MULTIPLE RUNS OF CABLE AT A PIPE SHOE. CABLE WATTAGE OUTPUT MUST BE CONSIDERED. PLEASE REFER TO NOTE #1 ON DRAWING 22.

1	04/16/14	STRAIN RELIEF PART REFERENCE CHANGED	DRAWN	EBC	TITLE	<b>INSTALL - CMH UNDER INSULATION END CAP</b>	
2	05/15/15	LOGO CHANGED	DATE	2011/06/01			
2	05/15/15	NOTE #4 ADDED	CHECKED	-			
2	05/15/15	ITEM #3 DESCRIPTION CHANGED	DATE	-			
			ENGINEER	-			
			DATE	-			
			APPROVED	-	SCALE	DRAWING NO	
REV	DATE	REVISION	DATE	-	NTS	<b>DWG016</b>	REV <b>2</b>

