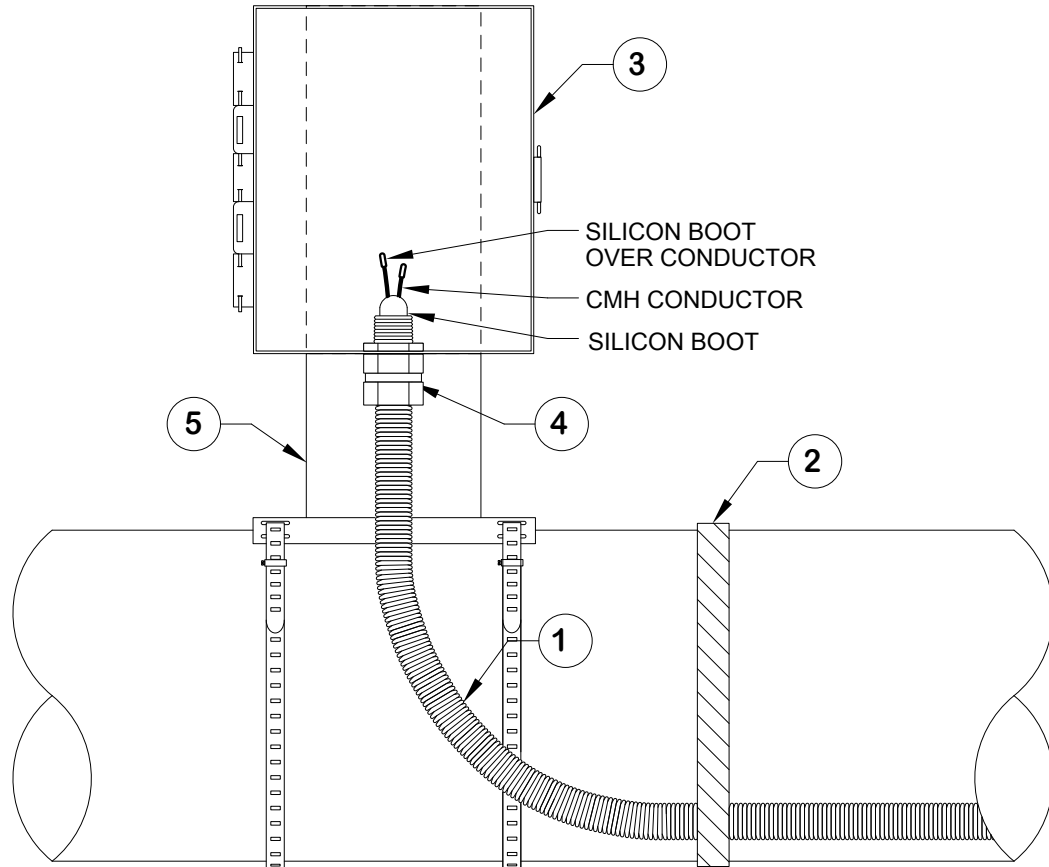


ITEM	DESCRIPTION	QUANTITY
1	PIEGUARD CMH HEATER CABLE	1
2	STAINLESS STEEL TIE WIRE	AS REQ'D
3	JUNCTION BOX. (AS SHOWN-DREXAN PART NUMBER HP-FG-JB)	1
4	STRAIN RELIEF. DREXAN PART NO. CMH-CON (DREX0074)	1
5	PIPE BRACKET. DREXAN PART NUMBER HP-BRAK-CMH	1



NOTES

1. PIPEGUARD CMH HEATER CABLE IS CERTIFIED TO TERMINATE IN ANY APPROVED ENCLOSURE (JUNCTION BOX). ALL MATERIALS REQUIRED TO COMPLETE THE TERMINATION WITHIN A JUNCTION BOX ARE INCLUDED WITH THE STRAIN RELIEF GLAND (DREXAN PART NUMBER DREX0074).
2. THE COLD LEAD (NON HEATED SECTION OF THE CABLE WHERE TERMINATED) IS EITHER 10 INCHES OR 20 INCHES, DEPENDING ON THE WATTAGE OUTPUT OF THE HEATING CABLE AND THE SUPPLY VOLTAGE. PLEASE REFER TO CMH-CON INSTALLATION INSTRUCTIONS.
3. THE DREXAN HP-BRAK-CMH IS A BRACKET THAT CAN BE USED TO MOUNT ANY ENCLOSURE WITH A BOTTOM CABLE ENTRY EITHER DIRECTLY TO THE PIPE OR TO THE OUTSIDE OF THE INSULATION.
4. WHERE MULTIPLE RUNS OR LOOPS OF A CONSTANT WATTAGE HEATER CABLE (SERIES MI AND PIPEGUARD CMH) ARE APPLIED TO PIPE SHOES AND SUPPORTS, CARE MUST BE TAKEN TO ENSURE THAT EXCESSIVE HEAT IS NOT GENERATED. DEPENDING IN PART UPON THE PIPE DIAMETER, IT MAY NOT BE NECESSARY TO INSTALL MULTIPLE RUNS OF CABLE AT A PIPE SHOE. CABLE WATTAGE OUTPUT MUST BE CONSIDERED. PLEASE REFER TO NOTE #1 ON INSTALLATION DRAWING 22.

1	04/16/14	STRAIN RELIEF PART REFERENCE CHANGED	DRAWN	EBC	TITLE	
2	05/15/15	LOGO CHANGED	DATE	2011/05/05	INSTALL - CMH TERMINATION JUNCTION BOX	
2	05/15/15	NOTE #4 ADDED	CHECKED	-		
2	05/15/15	ITEM #4 DESCRIPTION CHANGED	DATE	-		
			ENGINEER	-		
			DATE	-		
			APPROVED	-	SCALE	DRAWING NO
REV	DATE	REVISION	DATE	-	NTS	DWG014
						REV
						2

